

# BLS Freight Farm

Fall 2016 Update

In this issue:

- Seasonal Report
- Why Freight Farm is so Great
- How to Help
- FAQs

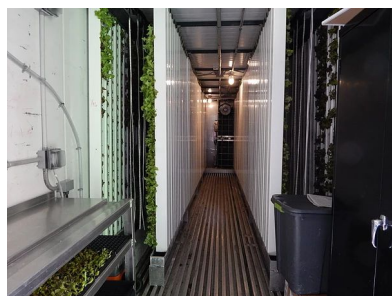


Farmers Emma, Jenna, Elena, and Elizabeth pose with a donation to a JP Food Pantry

## Seasonal Report

By Carina Layfield, III

It's been quite the season for the Freight Farm! For starters - over 50 students have been trained to work in the farm. These students volunteer during their study periods once or twice a work and help seed, plant, and harvest in the farm. In the past few months, we've successfully harvested lettuce, tomatoes, basil, parsley, cilantro, and radishes amongst others. Over the past few months we have continued to donate to a Food Pantry in JP. Overall this season has been a huge success.



The Inside of the Farm  
PC: Amy Wong

## Why Freight Farm's So Great

By Anna Wilcox, V

The odor of fresh vegetation fills your nostrils as soon as you walk in the door. You breathe a sigh of relief that you've managed to escape the struggles of school as you scribble down names and the time in the logbook while looking at previous notes to see what you should do today. Welcome to the freight farm! Here students manage to leave the worries and struggles of school behind as they take a period off to farm. By farm, I literally mean, tend to the growth of vegetables. The freight farm contains plentiful vegetation which it often contributes to local food shelters. Students work alone or in groups as they accomplish the day's tasks with the knowledge that they are bringing healthy food to deprived people while being themselves in their stress-free time. Freight Farm allows many students to have the rare opportunity to peacefully farm during school while being in the midst of the city.



Some radishes freshly picked

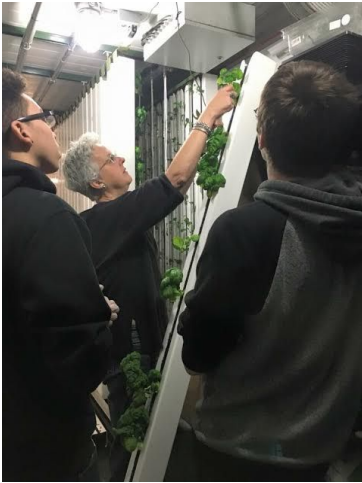
**Want to stay updated about the farm?**

**Like us on facebook: Boston Latin School Freight Farm**

**Follow us on Instagram: @BLSFreightFarm**

**Visit our website: [blsleafygreenmachine.org](http://blsleafygreenmachine.org)**

## Spotlight On: Nancy Waters



Since the Freight Farm was won in a contest a few years ago, Nancy Waters has poured hours and hours of nourishing love into the Farm. She has given up much of her time to come to BLS as often as possible during the week to train students and oversee the Farm. Over the summer, she came by several times a week in order to maintain the Farm and ran several internships. Nancy has a green thumb and is very innovative when it comes to the farm. It is due to her hard work and dedication that the Farm is even possible. The Freight Farm can be confusing and has a steep learning curve, but Nancy's presence with the Farm and dedication to it creates a strong work environment allowing for the vegetation and students to thrive. Her innovation and passion for the farm is why it is a success. Thank you, Nancy!

## How to Help

The BLS Freight Farm is always looking for help. If you're interested in helping with the farm please contact Ms. Arnold at [catebarnold@aol.com](mailto:catebarnold@aol.com). The Freight Farm is also always looking for donations. It can get expensive running the farm due to the supplies we need, including seeds and nutrients. If you would like to donate supplies or money to the farm, please contact Ms. Arnold.

## FAQs

### What is the Freight Farm?

The Freight Farm is a hydroponic farm that can grow vegetables year round in a controlled environment. The Freight Farm was made from a recycled shipping container and can easily be stored in urban areas.

### Where is the Freight Farm?

The BLS Freight Farm is located just outside the back of the school near the dining hall.

### What does it mean that the food is grown hydroponically?

Hydroponic farming is farming done without the use of soil.

### Can I go on a tour of the farm?

Yes! If you would like to take a tour of the farm please contact Ms. Arnold at [catebarnold@aol.com](mailto:catebarnold@aol.com).

## Other Updates

The Freight Farm has been featured on channel five news!

Earlier this year, a group of farmers toured Greenline Growers, a store based in Brookline that has three Freight Farms in an old warehouse. Check out their store for more information!

Freight Farm Webmaster, Hilary Wong, has redesigned the website! Be sure to check it out!

### Want to stay updated about the farm?

Like us on facebook: Boston Latin School Freight Farm

Follow us on Instagram: @BLSFreightFarm

Visit our website: [blsleafygreenmachine.org](http://blsleafygreenmachine.org)